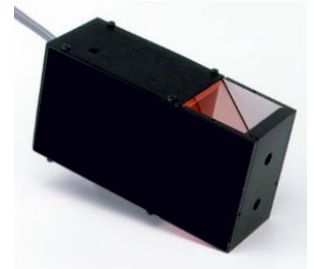


# MICROSCAN®

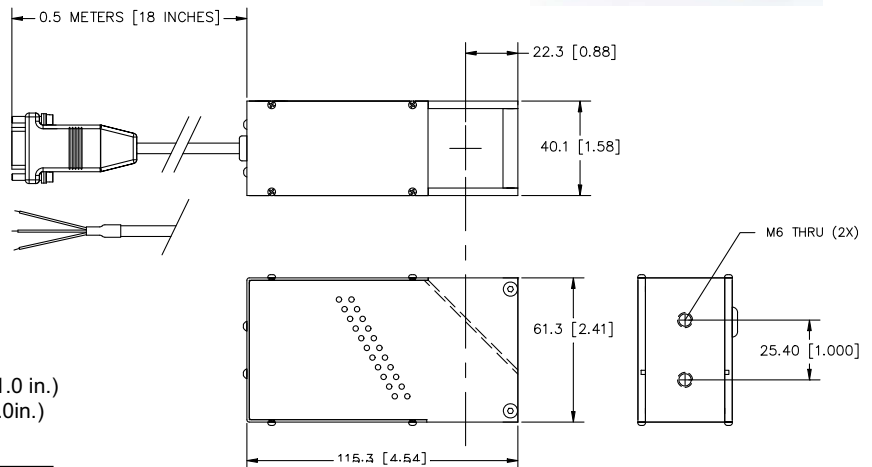
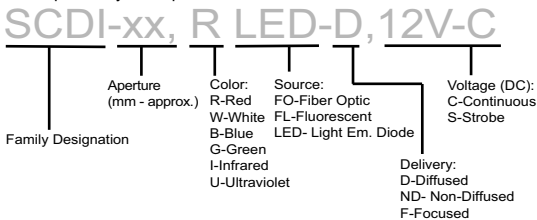
## NERLITE® SCDI®-25-LED

**SCDI-25-LED Series** models provide continuous diffuse illumination in the same optical path as the camera. They are designed for applications that have uneven specular surfaces requiring uniform lighting.



Model #	Description
NER-010301300	SCDI-25, R LED-D, 12V-C w/9 pin D-sub
NER-010301301	SCDI-25, R LED-D, 24V-S w/9 pin D-sub
NER-010301302	SCDI-25, W LED-D, 24V-C w/"Flying Leads"
010-301304	SCDI-25, R LED-D, 24V-S w/"Flying Leads", 630nm

Description Key Example



### Illumination & Electrical:

**Lighting Technique:** Square Continuous Diffuse  
**Light Aperture:** 25 mm x 25 mm (1.0 in. x 1.0 in.)  
**Field Of View x Stand-Off <sup>1</sup>:** 12 mm (0.5 in.) x 25 mm (1.0 in.)  
**Light Characteristics:**

Source	Color (nm)	Exp. Life	Voltage/Current (max.)		
			12V-C	24V-C	24V-S
LED	Red (636)	60k hrs.	420 mA	n/a	1.8 A pk.
LED	Red (630)	50k hrs.	n/a	n/a	1.8 A pk.
LED	White – 6500 Kelvin	10k hrs.	n/a	260 mA	n/a

<sup>1</sup>Suggested

**CE Conformity:** Yes

### Mechanical:

**L x W x H (mm/in.):** 115.3 mm x 40.1 mm x 61.3 mm (4.54 in. x 1.58 in. x 2.41 in.)  
**Mounting:** (2) M6  
**Housing Material:** Black Anodized Aluminum  
**Weight:** 255 grams (9.0 oz.)

### Environmental:

**Max. Operating Humidity:** 95% non-condensing  
**Operating Temp.** 40°C (104°F)  
**Storage Temp.** 50°C (122°F)

### Accessories:

Part #	Description	Models Used On
NER-010901900	SCM-2 Channel Strobe Control	24V-S
NER-010501402	CPS-24, 24VDC, US cord	24V-S <sup>1</sup>
NER-010501401	CPS-24, 24VDC, EU cord	24V-S <sup>1</sup>
NER-010502601	CPS-24T, 24VDC US w/9-pin D-sub	24V-C & 24V-S <sup>1,2</sup>
NER-010502602	CPS-24T, 24VDC EU w/9-pin D-sub	24V-C & 24V-S <sup>1,2</sup>
NER-010500301	CPS-12 3.5A, 12VDC, US Cord	12V-C
NER-010500303	CPS-12 3.5A, 12VDC, EU Cord	12V-C
NER-010502700	ICM-1, M/D Intensity Cntrl, 12V-C	12V-C
NER-010502702	SCM-1 Channel M/D Strobe Control	24V-S
NER-030003702	Ext. Cable, Cont., 1.8 M (6 ft.)	12V-C
NER-030003703	Ext. Cable, Cont., 3.0 M (10 ft.)	12V-C
NER-030007006	Ext. Cable, Strobe, 1.8 M (6 ft.)	24V-S <sup>2</sup>
NER-030007010	Ext. Cable, Strobe, 3.0 M (10 ft.)	24V-S <sup>2</sup>
NER-030006900	Y cable, 2 Lights, 9 pin D-sub Strb.	24V-S <sup>2</sup>
NER-030003601	Y cable, 2 Lights, 9 pin D-sub Cont.	12V-C

<sup>1</sup>NER-01050140x used only with NER-010901900;

NER-01050260x used with either NER-010502702 or 24V-C lights with DB-9 connectors

<sup>2</sup>24V-C accessories are not available for "Flying Leads" configurations

### Cables/Connectors:

Connector	Length	Pin#	1	2	3	4	5	6	7	8	9
<b>12V-C Models</b>	9 pin D-sub Male	0.5 M (18 in.)	n/a	n/a	GND	+12VDC	n/a	n/a	n/a	n/a	n/a
<b>24V-S Models <sup>1</sup></b>	9 pin D-sub Male	2.0 M (6.6 ft.)	V-	n/a	n/a	+24VDC	n/a	n/a	n/a	n/a	n/a
<b>24V-C Models <sup>1</sup></b>	n/a (flying leads) <sup>1</sup>	4.5 M (15.0 ft.)	n/a	n/a	n/a	n/a	n/a	n/a	n/a	n/a	n/a

<sup>1</sup>Note: 24V-C & 24V-S Models w/"Flying Leads" have a 4.5 M (15 ft.) cable with two (2) tinned leads plus a shield (no connector); leads are labeled GND and V+ (+24VDC) on 24V-C models and V- and V+ (+24VDC) on 24V-S models.