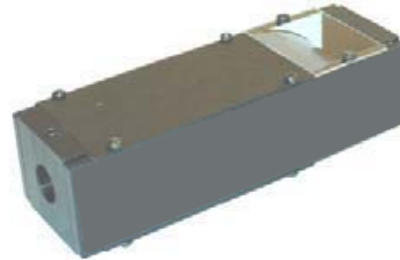


NERLITE®SCDI-25-FO

The SCDI® -25, FO, Square Continuous Diffuse Illuminator provides continuous diffuse illumination in the same optical path as the camera. The SCDIs patented design addresses critical applications involving highly specular surfaces. The SCDI is designed to minimize surface textures and elevation changes while providing uniform illumination over the field of view. The SCDI-25, FO, requires a fiber optic light source (part# 238-001000 or 238-001100 recommended) and single guide (part # NER-238000500 recommended).

Model #	Description
NER-010302300	SCDI®-25, FO



Illumination & Electrical:

Lighting Technique:	Square Continuous Diffuse
Source Type:	Fiber Optic
Spectrum:	Dependent upon source
Light Aperture:	25 mm x 25 mm (1.0 in. x 1.0 in.)
Field Of View x Stand-Off ¹:	12 mm (0.5 in.) x 12 mm (0.5 in.)
Fiber Optic Ferrule:	10 mm (0.393 in.) 1 Leg Bundle

¹ Suggested

Mechanical:

L x W x H (mm/in.):	101.6 mm x 31.8 mm x 27.4 mm (4.00 in. x 1.25 in. x 1.08 in.)
Mounting:	(2) 1/4-20 x 6.4 mm (0.25 in.)
Housing Material:	Black Anodized Aluminum
Weight:	tbd

Environmental:

Max. Operating Humidity	95% non-condensing
Operating Temp.	40°C (104°F)
Storage Temp.	50°C (122°F)

Accessories:

Part #	Description
NER-238000500	LG-1 Single guide
238-001000	CS-1, AC Light source
238-001100	CS-2, DC Regulated light source

